

score

ward de jonghe

etudes

for solo viola

(2019)

dedication

an frau dr. E. Coorevits

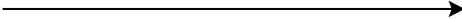
duration


3 - 4 minutes

notation


– accidentals hold for one note only

– short
, ^ ◌ ◻
long

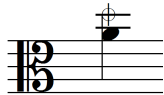


– grace notes (as fast as possible): 

– *forte* gesture, rather than *forte* sound
result: "**f**"

–  : technique transition

– muted string:



– tremolo (as fast as possible):



– glissando:



– balzato (number of attacks indetermined):



– m.s.t.: molto sul tasto (near to the left hand fingers)

– s.t.: sul tasto

– p.n.: posizione naturale (ordinario)


– s.p.: sul ponticello

– m.s.p.: molto sul ponticello (touching the bridge)

– free bowing, unless indicated

– bowing indication between brackets are merely suggestions

– circular bowing (oscillate between m.s.t. and s.p.): 

– heavy bow pressure: 

– left hand pizz: +

performance instructions

etude I

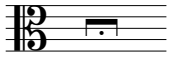
- the eleven fragments are to be played in a sequence determined by the performer.
- if desired, one fragment of choice can appear twice in the sequence; all the others are heard but once.
- consecutive fragments can either be connected immediately, or be separated by silences.
- the performer should aim to present a musical unity, rather than 11 (or 12) segments.
- duration: 2 - 3 min.

etude II

- the barlines and metric indications serve a mere readability purpose, no metric accents should be added.
- the change of right hand techniques should never interrupt the flow of the piece.
- the semiquavers in a bar of “ $\frac{4}{20}$ ” (line 6) are to be played at the speed of quintuplets ($\text{♩} \geq 220$).
- the semiquavers in a bar of “ $\frac{8}{24}$ ” (line 8) run at the speed of triplets ($\text{♩} \geq 264$).
- duration: 1 min.

I

Tempo rubato (♩ = 50 - 72)



1 *f* sub. *pp*

2 *p* sempre *poch. vibr.*

3 *pp*

4 *mf* *pp*

5 *ppp* 3:2

6 *mf* *secco*

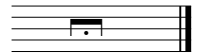
7 *ff*

8 *mf* *ff*

9 *mp* *p* *ppp* dampen!

10 *mf* *p* *espr. (con vibr.)*

11 *p* (*poco*)



* in order to play m.s.t. sul IV, the bow can be placed between the left hand and the nut.

