

score

ward de jonghe

Ansatz

prelude for orchestra

(2021/2022)

dedication

written for Flanders Symphony Orchestra, as a part of the Composers' Academy.
many thanks to Kristiina Poska, Martijn Dendievel, Daan Janssens, the musicians and crew of
Symfonieorkest Vlaanderen.
premiere: 2022-05-05 at Concertgebouw Brugge.

duration

ca 5' 15"

instrumentation

1 piccolo (= flute 3.)
2 flutes
2 oboes
1 cor anglais (= oboe 3.)
2 clarinets in B \flat
1 bass clarinet in B \flat
2 bassoons
1 contrabassoon (= bassoon 3.)

4 horns in F
3 trumpets in C
2 tenor trombones
1 bass trombone
1 tuba

timpani

percussion 1:
– glockenspiel
– crotales
– chimes
– suspended cymbal (large)
– tam-tam (large)

percussion 2:
– vibraphone
– triangle (large)
– susp. cymbal (medium)
– tambourine
– bass drum

percussion 3:
– thai gongs (d, d \sharp , e)
– triangle (small)
– susp. china cymbal (small)
– 5 woodblocks
– 2 bongos
– tam-tam (medium)

harp
celesta
piano

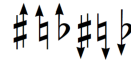
strings

performance notes

– transposed score

– accidentals hold for entire bar

– accidentals with arrows alter the pitch by a quarter tone:



– flutter tongue (winds) / unmeasured tremolo (strings):



– m.s.t.: molto sul tasto

– s.t.: sul tasto

– p.n.: posizione naturale ('ordinario')

– s.p.: sul ponticello

– m.s.p.: molto sul ponticello

– 1/2 legno: bow with both wood and hair



– balzato (number of attacks indetermined):

– all bowing indications are merely suggestions

Ansatz

prelude for orchestra

moderato (♩ = ca 84)

molto rit.

This page contains the musical score for the prelude 'Ansatz' by Ward de Jonghe. The score is written for a full orchestra and is in 4/4 time. The tempo is marked 'moderato' with a quarter note equal to approximately 84 beats per minute. The score is divided into five measures, with the final measure marked 'molto rit.' (rushing). The instruments and their parts are as follows:

- Woodwinds:** Piccolo, Flute 1 & 2, Oboe (1 & 2), Clarinet 1 & 2 (Bb), Bass Clarinet (Bb), Bassoon 1 & 2, Contrabassoon.
- Brass:** Horn (F) 1 & 2, Trumpet (C) straight mutes 1 & 2, Tenor Trombone 1 & 2, Bass Trombone, Tuba, and Timpani.
- Percussion:** Percussion 1 (cymbals, vibraphone, woodblock, tom-toms, snare), Percussion 2 (vibraphone, woodblock, tom-toms, snare), and Harp.
- Strings:** Violin I & II (divisi), Viola (divisi), Violoncello (divisi), Contrabass solo, and Altri.

The score includes various dynamic markings such as *mf*, *pp*, *sfz*, *f*, *ppp*, *mp*, and *ppp*. It also features performance instructions like 'con sord.' (with mutes), 'staccato', 'secco', 'glissando', and 'vibrato sempre motor off'. The score is densely notated with many slurs, ties, and articulation marks.

B

This page of the musical score contains the following parts and markings:

- Woodwinds:** Flute 1 & 2 (fl. 1.2), Oboe 2 & 3 (ob. 2, 3), Clarinet 1 & 2 (cl. 1.2), Bassoon 1 & 2 (bsn. 1.2), Horn 1 & 2 (hn. 1.2), Trumpet 1 & 2 (tp. 1.2), Trombone 1 & 2 (tbn. 1.2), Baritone (bbtn.), and Tuba (tba.).
- Brass:** Trombone 3 (tbn. 3).
- Percussion:** Timpani (timp.), Snare Drum (perc. 1), Cymbal (perc. 2), and Bass Drum (perc. 3).
- Keyboard:** Harp (hp.).
- Strings:** Violin I (vn. I), Violin II (vn. II), Viola (va.), Violoncello (vc.), and Contrabass (cb.).

The score includes various dynamic markings such as *pp*, *p*, *f*, *ff*, *mf*, *mp*, and *ppp*. It also features performance instructions like *gliss*, *lock*, *con sord*, and *tutti*. Musical notation includes slurs, accents, and specific rhythmic values.

This page of a musical score contains the following instruments and parts:

- picc.** (Piccolo)
- fl. 1, 2** (Flute)
- ob. 1, 2, 3** (Oboe)
- cl. 1, 2** (Clarinet)
- bcl.** (Bass Clarinet)
- bsn. 1, 2, 3** (Bassoon)
- hrn. 1, 2, 3, 4** (Horn)
- tpt. 1, 2, 3** (Trumpet)
- tbn. 1, 2, 3** (Trombone)
- btrn.** (Baritone)
- tba.** (Tuba)
- timp.** (Timpani)
- perc. 1, 2, 3** (Percussion): includes Cymbal, vibra mallets (soft), vibraphone, wood blocks, vibra mallets (hard), bass drum, snare drum, and tom-tom.
- hp.** (Harp)
- cel.** (Cello)
- pno.** (Piano)
- vn. I, II** (Violin)
- va. div.** (Viola)
- vc. div.** (Violoncello)
- cb.** (Double Bass)

The score includes various musical notations such as dynamics (e.g., *mf*, *pp*, *f*, *ff*, *decresc.*), articulation (e.g., *acc.*, *div.*), and performance instructions (e.g., *slow circular movement (no attack)*, *no star*, *no star*, *no star*). It also features complex rhythmic patterns with time signatures like 3/2, 2/4, and 7/4.

This page of a musical score contains the following parts and markings:

- picc.**: Piccolo part, starting with *ppp* dynamics.
- fl. 1.2.**: Flute parts, including a *ppp* dynamic and a *pp* dynamic with an *a2* marking.
- ob. 1.2.**: Oboe parts, featuring *ppp* and *pp* dynamics.
- cl. 1.2.**: Clarinet parts, with *pp* and *ppp* dynamics.
- bsa. 1.2.**: Bassoon parts, including *pp* and *mf* dynamics.
- obsa.**: Bassoon part, with *pp* and *pp* dynamics.
- 1.2.**: Horn parts, with *pp* dynamics.
- 3.4.**: Horn parts, with *pp* dynamics.
- 1.2.**: Trumpet part, including *pp*, *mf*, and *f* dynamics, with instructions like "solo (straight mute)" and "cup mutes".
- 3.**: Trumpet part, with *pp* dynamics.
- tba. 1.2.**: Trombone parts, with *f* and *pp* dynamics.
- timp.**: Timpani part, with *ppp* dynamics and *L.v.* (live) markings.
- 1.**: Percussion part, including *mp* dynamics, *L.v.* markings, and specific instructions for "chimes", "hammer (soft)", and "sax drum".
- perc. 2.**: Percussion part, with *p* dynamics.
- 3.**: Percussion part, with *mp* dynamics and *L.v.* markings.
- hp.**: Harp part, with *mp*, *ppp*, and *pp* dynamics, and *L.v.* markings.
- cel.**: Cello part, with *mp* dynamics and *L.v.* markings.
- pno.**: Piano part, with *mp* dynamics and *L.v.* markings.
- vn. I div.**: Violin I parts, including *pp*, *ppp*, *mf*, and *pp* dynamics, with *div. a2* and *arco s.l.* markings.
- vn. II div.**: Violin II parts, including *pp*, *ppp*, *mf*, and *pp* dynamics, with *div. a2* and *arco s.l.* markings.
- va. div.**: Viola parts, including *p*, *pp*, *ppp*, and *pp* dynamics, with *tutte*, *pizz*, and *arco s.l.* markings.
- vc. div.**: Violoncello parts, including *pp*, *ppp*, *mf*, and *pp* dynamics, with *arco s.l.* and *pizz* markings.
- cb. div.**: Double Bass parts, including *ppp* and *pp* dynamics, with *unis. arco III* markings.

G *Adagio* (♩ = ca 54) **H**

ff. 1.2. *pp* *mp* *pp*

ob. 1.2. *p espr* *mf* *ppp*

c.a. *solo* *pp* *mf* *pp* *espressivo*

cl. 1. *ppp* *mp* *ppp*

bc1. *pp* *mp* *pp*

bsn. 1. *pp*

1.2. *con sord* *pp* *mp* *pp*

3.4. *con sord* *pp* *mp* *pp*

timp. *ppp*

1. *Shime* *marimba mallets* *ppp* *p* *ppp* *Cymbal* *timpani mallets (soft)* *ppp* *p* *ppp* *L.v.*

perc. 2. *xylophone* *vibra mallets (hard)* *mp* *ppp* *L.v.* *trough* *p* *ppp* *L.v.*

3. *low sord* *boom* *(soft)* *pp* *ppp* *L.v.*

lp. *solo* *L.v.* *p* *pp* *ppp* *L.v.* *p.d.l.t.* *mf*

cel. *mp* *ppp* *L.v.*

pno. *solo* *mf* *p* *mp* *pp*

vn. I *Adagio* (♩ = ca 54) **H** *pp* *mp* *poco* *p* *con sord* *pp* *mp*

altri *pp* *pp* *pp* *pp*

vn. II *div.* *con sord* *balzato* *pp* *mp* *pp* *ppp* *IV* *pp* *pp*

va. sola *pp* *mp* *pp* *pp* *p.n.* *pp* *mp* *pp* *I. sola* *pp*

altre *pp* *pp* *pp* *pp* *p.n.* *pp* *mp* *pp* *altre div.* *ppp* *p* *pp*

vc. div. *2 soli* *con sord* *s.t.* *pp* *ppp* *ppp* *ppp* *p* *pp*

altri *con sord* *pizz* *pp* *ppp* *ppp* *ppp* *p* *pp*

cb. solo *pp* *mp* *pp* *con sord* *pp*

altri *con sord* *pizz* *p* *ppp* *ppp* *ppp* *p* *pp*

